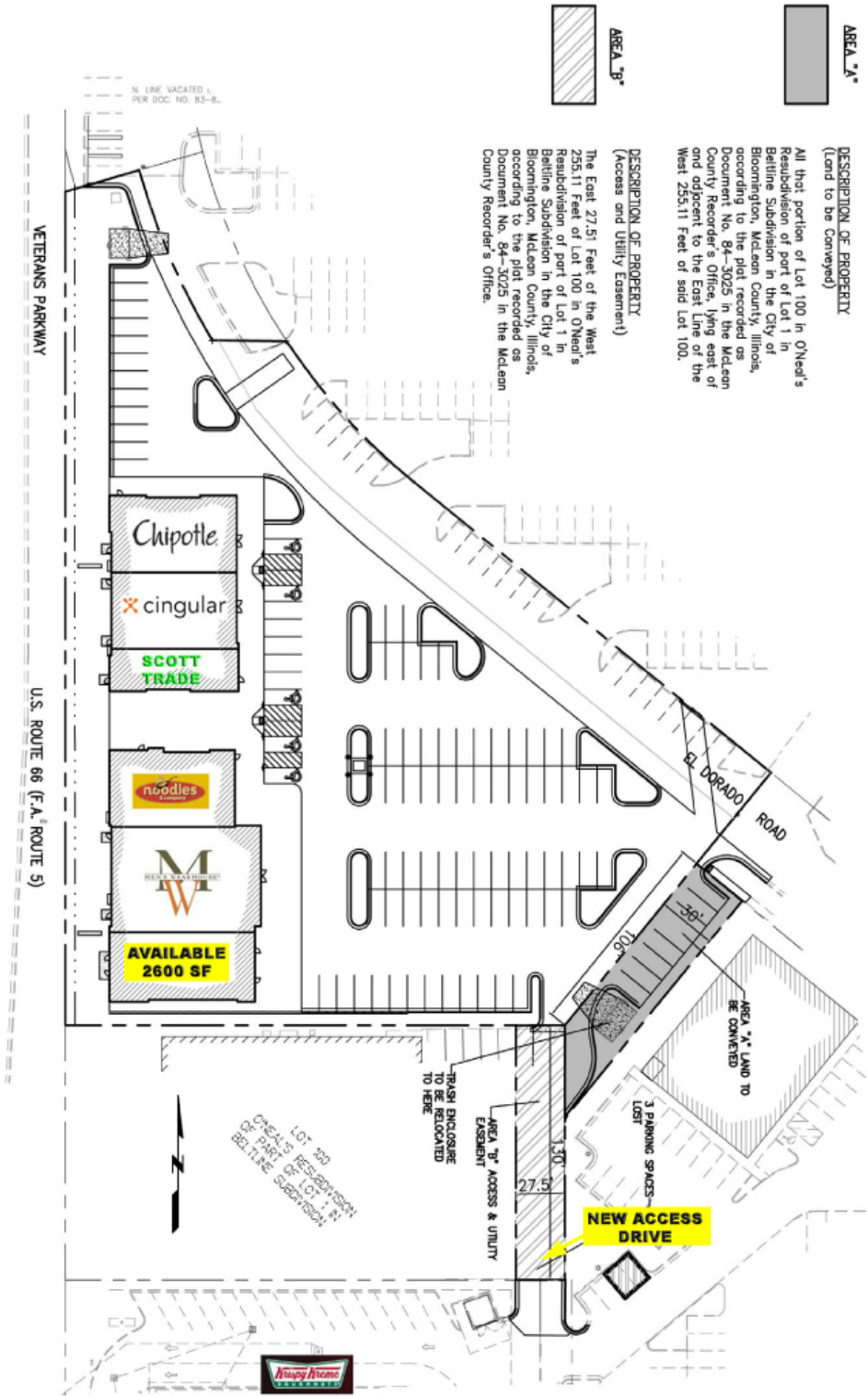


305 Veterans Parkway *Bloomington, IL*



AREA 1A
DESCRIPTION OF PROPERTY (Land to be Conveyed)
All that portion of Lot 100 in O'Neal's Resubdivision of part of Lot 1 in Belline Subdivision in the City of Bloomington, McLean County, Illinois, according to the plat recorded as Document No. 84-3025 in the McLean County Recorder's Office, lying east of and adjacent to the East Line of the West 255.11 Feet of said Lot 100.

AREA 1B
DESCRIPTION OF PROPERTY (Access and Utility Easement)
The East 27.51 Feet of the West 255.11 Feet of Lot 100 in O'Neal's Resubdivision of part of Lot 1 in Belline Subdivision in the City of Bloomington, McLean County, Illinois, according to the plat recorded as Document No. 84-3025 in the McLean County Recorder's Office.

N. LINE VACATED L. PER DOC. NO. 83-8.

VETERANS PARKWAY

U.S. ROUTE 66 (I.A. ROUTE 5)

EL DORADO ROAD

AREA 1A LAND TO BE CONVEYED
3 PARKING SPACES LOST

TRASH ENCLOSURE TO BE RELOCATED TO HERE
AREA 1B ACCESS & UTILITY EASEMENT

LOT 100 IS A PORTION OF LOT 1 IN THE BELLINE SUBDIVISION

