

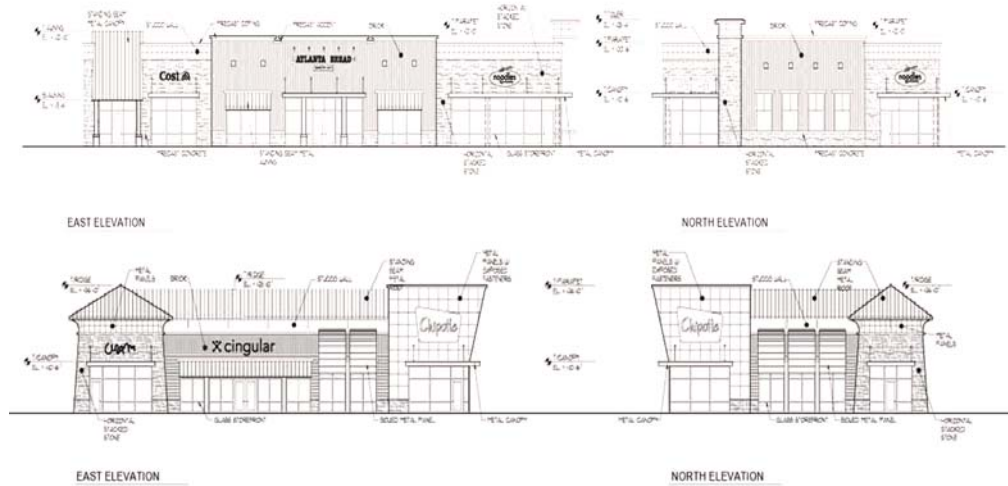
Retail Space Available

Beltline Subdivision Bloomington, IL



DEVELOPMENT HIGHLIGHTS

- Ground Lease and up to 7,100 SF of divisible retail space in the heart of the mail retail corridor in the Bloomington-Normal area, Veteran's Parkway
- Directly across the street from State Farm World Headquarters and St. Joseph Hospital.
- Area retail includes: Home Depot, Menards, Sam's Club, Wal-Mart, Bed, Bath & Beyond, Office Depot, Cost Plus, Best Buy, Target, Jewel-Osco, Borders and Petco.
- High traffic counts and good area demographics.



DEMOGRAPHICS

	1 mile	2 miles	5 miles
Population	9,649	40,219	118,892
Avg. Household Income	\$71,421	\$74,940	\$68,744
No. of Employees	28,565	41,620	77,973
Traffic Counts	Veteran's Parkway: 45,300 CPD		Eastland Road: 11,200 CPD

CONTACT

Michael Chin

Tartan Realty Group
 Office: 312 377 8385
 Mobile: 312 636 8467
michaelc@tartanrealtygroup.com

